

See discussions, stats, and author profiles for this publication at: <https://www.researchgate.net/publication/323134914>

# Genetic and Mechanistic Diversity in Hemophagocytic Lymphohistiocytosis

Article in *The Journal of allergy and clinical immunology* · February 2018

DOI: 10.1016/j.jaci.2017.12.060

CITATIONS

0

READS

196

31 authors, including:



**Erin Christine Peckham-Gregory**

Baylor College of Medicine

43 PUBLICATIONS 232 CITATIONS

[SEE PROFILE](#)



**Lisa R Forbes**

Baylor College of Medicine

144 PUBLICATIONS 2,922 CITATIONS

[SEE PROFILE](#)



**Emily Mace**

Baylor College of Medicine

174 PUBLICATIONS 3,860 CITATIONS

[SEE PROFILE](#)



**Harshal Abhyankar**

Baylor College of Medicine

44 PUBLICATIONS 1,150 CITATIONS

[SEE PROFILE](#)

Some of the authors of this publication are also working on these related projects:



Primary Immunodeficiencies [View project](#)



cnvScan - CNV screening and annotation package [View project](#)

## PHAGOCYTES, GRANULOCYTES, AND MYELOPOIESIS

## Genetic and mechanistic diversity in pediatric hemophagocytic lymphohistiocytosis

Ivan K. Chinn,<sup>1,3</sup> Olive S. Eckstein,<sup>1,2,4</sup> Erin C. Peckham-Gregory,<sup>1,4</sup> Baruch R. Goldberg,<sup>1,3</sup> Lisa R. Forbes,<sup>1,3</sup> Sarah K. Nicholas,<sup>1,3</sup> Emily M. Mace,<sup>1,3</sup> Tiphonie P. Vogel,<sup>1,3</sup> Harshal A. Abhyankar,<sup>2,4</sup> Maria I. Diaz,<sup>2,4</sup> Helen E. Heslop,<sup>1,2,4,5</sup> Robert A. Krance,<sup>1,2,4,5</sup> Caridad A. Martinez,<sup>1,2,4,5</sup> Trung C. Nguyen,<sup>1,2,6,7</sup> Dalia A. Bashir,<sup>1,2,6,7</sup> Jordana R. Goldman,<sup>1,2,6</sup> Asbjørg Stray-Pedersen,<sup>8-10</sup> Luis A. Pedroza,<sup>11</sup> M. Cecilia Poli,<sup>1,2,12</sup> Juan C. Aldave-Becerra,<sup>13</sup> Sean A. McGhee,<sup>14</sup> Waleed Al-Herz,<sup>15</sup> Aghiad Chamdin,<sup>16</sup> Zeynep H. Coban-Akdemir,<sup>10,17</sup> Shalini N. Jhangiani,<sup>17,18</sup> Donna M. Muzny,<sup>17,18</sup> Tram N. Cao,<sup>1,3</sup> Diana N. Hong,<sup>1,3</sup> Richard A. Gibbs,<sup>10,17,18</sup> James R. Lupski,<sup>1,2,10,17,18</sup> Jordan S. Orange,<sup>1,3</sup> Kenneth L. McClain,<sup>1,2,4</sup> and Carl E. Allen<sup>1,2,4</sup>

<sup>1</sup>Department of Pediatrics, Baylor College of Medicine, Houston, TX; <sup>2</sup>Department of Pediatrics, Texas Children's Hospital, Houston, TX; <sup>3</sup>Division of Pediatric Immunology/Allergy/Rheumatology and <sup>4</sup>Division of Pediatric Hematology/Oncology, Texas Children's Hospital Cancer Center, Houston, TX; <sup>5</sup>Center for Cell and Gene Therapy, Baylor College of Medicine, Houston, TX; <sup>6</sup>Division of Critical Care Medicine, Texas Children's Hospital, Houston, TX; <sup>7</sup>Center for Translational Research on Inflammatory Diseases, Michael E. DeBakey Veteran Affairs Medical Center, Houston, TX; <sup>8</sup>Norwegian National Unit for Newborn Screening, Department of Pediatric and Adolescent Medicine, Oslo University Hospital, Oslo, Norway; <sup>9</sup>Institute of Clinical Medicine, University of Oslo, Oslo, Norway; <sup>10</sup>Baylor-Hopkins Center for Mendelian Genomics, Houston, TX; <sup>11</sup>Universidad San Francisco de Quito, Colegio de Ciencias de la Salud-Hospital de los Valles, Quito, Ecuador; <sup>12</sup>Universidad del Desarrollo, Clinica Alemana de Santiago, Santiago, Chile; <sup>13</sup>Division of Allergy and Immunology, Hospital Nacional Edgardo Rebagliati Martins, Lima, Peru; <sup>14</sup>Division of Immunology and Allergy, Department of Pediatrics, Stanford University School of Medicine, Palo Alto, CA; <sup>15</sup>Department of Pediatrics, Kuwait University, Kuwait City, Kuwait; <sup>16</sup>Department of Pediatrics and Human Development, Michigan State University, Lansing, MI; and <sup>17</sup>Department of Molecular and Human Genetics and <sup>18</sup>Human Genome Sequencing Center, Baylor College of Medicine, Houston, TX

## KEY POINTS

- Whole-exome sequencing may identify specific therapeutic opportunities for patients with HLH.
- HLH should be conceptualized as a critical illness phenotype driven by toxic activation of immune cells from different underlying mechanisms.

**The HLH-2004 criteria are used to diagnose hemophagocytic lymphohistiocytosis (HLH), yet concern exists for their misapplication, resulting in suboptimal treatment of some patients. We sought to define the genomic spectrum and associated outcomes of a diverse cohort of children who met the HLH-2004 criteria. Genetic testing was performed clinically or through research-based whole-exome sequencing. Clinical metrics were analyzed with respect to genomic results. Of 122 subjects enrolled over the course of 17 years, 101 subjects received genetic testing. Biallelic familial HLH (fHLH) gene defects were identified in only 19 (19%) and correlated with presentation at younger than 1 year of age ( $P < .0001$ ). Digenic fHLH variants were observed but lacked statistical support for disease association. In 28 (58%) of 48 subjects, research whole-exome sequencing analyses successfully identified likely molecular explanations, including underlying primary immunodeficiency diseases, dysregulated immune activation and proliferation disorders, and potentially novel genetic conditions. Two-thirds of patients identified by the HLH-2004 criteria had underlying etiologies for HLH, including genetic defects, autoimmunity, and malignancy.**

**Overall survival was 45%, and increased mortality correlated with HLH triggered by infection or malignancy ( $P < .05$ ). Differences in survival did not correlate with genetic profile or extent of therapy. HLH should be conceptualized as a phenotype of critical illness characterized by toxic activation of immune cells from different underlying mechanisms. In most patients with HLH, targeted sequencing of fHLH genes remains insufficient for identifying pathogenic mechanisms. Whole-exome sequencing, however, may identify specific therapeutic opportunities and affect hematopoietic stem cell transplantation options for these patients. (*Blood*. 2018;132(1):89-100)**

## Introduction

Isolated cases of children with fever, fatal systemic inflammation, and bone marrow or tissue specimens demonstrating hemophagocytosis were first described in 1939,<sup>1</sup> followed by familial reports that suggested a potential genetic predisposition toward hemophagocytic lymphohistiocytosis (HLH).<sup>2</sup> Consensus criteria were developed to standardize clinical trial enrollment (supplemental Table 1, available on the *Blood* Web site)<sup>3</sup> and now serve as de facto diagnostic criteria

for HLH. HLH, however, might be better conceptualized as a convergent entity or common final pathway/phenotype characterized by toxic immune activation secondary to a range of diverse underlying molecular diagnoses rather than as a distinct disease.

Historically, patients have long been categorized as having either "primary" HLH from an inherited defect in cytolytic immune function or "secondary" HLH resulting from immune activation

incited by various antigenic challenges, including autoimmune disease, persistent infection, or malignancy. For primary or familial HLH (fHLH), mutations in genes needed for cytolytic immune function have been identified and serve as part of the HLH-2004 diagnostic criteria.<sup>3,4</sup> The clinical distinctions between primary and secondary HLH may not be this straightforward; in HLH-94, no difference in survival was observed for patients with presumed primary vs secondary HLH.<sup>5</sup> Thus, it becomes apparent that clinical fulfillment of the HLH-2004 criteria does not necessarily imply defective cytolytic activity for all patients. Similarly, the spectrum of inherited genetic defects that inform a need for immune suppression or hematopoietic stem cell transplantation (HSCT) are inadequately captured by primary or secondary HLH categories.

The uncertain performance of the HLH-2004 criteria and dire consequences of missed or incorrect HLH diagnosis have led to widely variable approaches to diagnosis and treatment of patients.<sup>6,7</sup> If untreated, fHLH is fatal in 90% of children, and prompt initiation of immunochemotherapy in patients with active HLH remains critical for survival.<sup>8-10</sup> HSCT is necessary for long-term survival in patients at risk for recurrent episodes of HLH.<sup>7</sup> Alternately, it has been proposed that clinical diagnosis of HLH using the HLH-2004 criteria with no confirmed gene mutations may prove dangerous and that these criteria fail to distinguish HLH from sepsis or systemic inflammatory response syndrome, for which immunosuppression or HSCT may be contraindicated.<sup>6</sup> Targeted sequencing of fHLH genes in ethnically enriched cohorts has identified disease-causing gene mutations in 34% to 100% of affected individuals with greater enrichment when genetic testing is restricted to patients with abnormal expression of HLH-related proteins or defective cytolytic function.<sup>11-14</sup> In this study, we sought to evaluate the genomic spectrum and associated outcomes of a prospectively enrolled, multiethnic cohort of children clinically diagnosed with HLH, using the HLH-2004 criteria at a large tertiary care center.

## Methods

### Subject enrollment

Patients at Texas Children's Hospital or collaborating referral centers who met HLH-2004 criteria for the diagnosis of HLH were offered participation in this research study, approved by the Baylor College of Medicine Institutional Review Board. All subjects and family members provided written informed consent to have their clinical and genetic information published in medical or scientific journals. All procedures involving human participants were performed in accordance with institutional and international ethical standards.

### Ascertainment of clinical data

Fulfillment of the HLH-2004 diagnostic criteria was confirmed for all subjects. Comorbidities, clinical outcomes, and clinical genetic test results, including targeted individual gene sequencing, HLH gene panel testing, and clinical whole-exome sequencing (WES), were derived from the medical record. Clinical WES was conducted by Baylor Genetics Laboratories (Houston, TX). None of the subjects had known features of or mutations in genes associated with primary immunodeficiency diseases or dysregulated immune activation or proliferation before HLH onset and diagnosis.

### Research-based WES and analysis

WES of probands who lacked clinical molecular diagnoses and their family members was conducted within the Baylor-Hopkins Center for Mendelian Genomics, as previously described (supplemental Methods).<sup>15,16</sup> For all subjects who underwent HSCT, pretransplantation samples were sequenced.

Variant selection methods have been previously reported.<sup>15,16</sup> Briefly, variants were prioritized using 7 criteria: existence in known HLH-causing genes; appropriate cosegregation with phenotype among family members; allelic frequencies in internal and public (eg, Exome Aggregation Consortium) exome databases less than 0.005 for autosomal and X-linked recessive inheritance models and less than 0.001 for autosomal dominant inheritance models; in silico conservation and damage prediction (eg, Combined Annotation Dependent Depletion score<sup>17</sup> greater than the Mutational Significance Cutoff<sup>18</sup>); expression in immune cells, especially T cells, natural killer (NK) cells, monocytes, and macrophages (eg, <http://biogps.org>); relevance of the affected gene to known diseases that predispose toward infection, autoimmunity, or malignancy (eg, in the Online Mendelian Inheritance for Man catalog); and known function of the affected protein in immune function and inflammation (eg, in PubMed). Stratified disease-associated variants were confirmed by Sanger sequencing. Variants in common fHLH genes (*PRF1*, *STX11*, *STXBP2*, and *UNC13D* plus *LYST* and *RAB27A*) were scrutinized for possible contributions to disease.

### Categorization of variants in primary immunodeficiency disease genes identified by WES

For variants in primary immunodeficiency disease (PIDD)-associated genes, molecular diagnoses were designated as "likely" (supplemental Table 4) if HLH had been previously demonstrated in other individuals with the associated PIDD, the associated PIDD was known to impair cytolytic T or NK cell function, or the molecular diagnosis was consistent with relevant features of the clinical phenotype of the subject. If the molecular diagnosis was otherwise solely supported by the exome data analyses, it was considered a "possible" genetic explanation for HLH in the subject.

### Statistical analysis

Demographic and clinical information were abstracted from medical records. The  $\chi$ -squared test was used if counts exceeded 5; otherwise Fisher's Exact test was implemented. Logistic regression was used to obtain odds ratios and 95% confidence intervals for comparisons with counts exceeding 5. Kaplan-Meier survival curves were generated to estimate survival from time of diagnosis to end of follow-up, and a log-rank test estimated differences across strata of interest. Subjects whose genetic profiles aligned with multiple categories ( $n = 3$ ) were excluded from analyses stratified by genetic profile ( $n = 119$ ). Otherwise, all 122 subjects were assessed. All statistical analyses were conducted in STATA 13.v1.

## Results

### Demographics

Overall, 122 subjects clinically diagnosed with HLH at Texas Children's Hospital and referring centers from 1999 to 2016 were enrolled (Table 1). All subjects met HLH-2004 diagnostic criteria for HLH. Median age at diagnosis was 6.1 years (range, 2.1

**Table 1. HLH patient characteristics**

Patient characteristics	HLH (n = 122)
Age at diagnosis, median (range), y	6.07 (0.04-18.50)
<b>Sex, n (%)</b>	
Male	62 (50.82)
Female	60 (49.18)
<b>Race/ethnicity, n (%)</b>	
Non-Hispanic white	24 (19.67)
Hispanic	52 (42.62)
Non-Hispanic black	19 (15.57)
Non-Hispanic Asian	6 (4.92)
Non-Hispanic other	2 (1.64)
Other	13 (9.84)
Unknown	7 (5.74)
<b>HLH genetic profile, n (%)</b>	
fHLH	19 (15.57)
PIDD	11 (9.02)
DIAP	8 (6.56)
PIDD/DIAP	3 (2.46)
Other candidate defects	5 (4.10)
No genetic explanation	76 (62.30)
No biallelic fHLH gene variants	63 (51.64)
One fHLH gene variant	6 (4.92)
Possible digenic fHLH variants	7 (5.74)
<b>HLH-related trigger, n (%)</b>	
Infection	44 (36.07)
Autoimmune	32 (26.23)
Malignancy	14 (11.48)
No associated trigger	32 (26.23)
<b>Therapeutic strategy, n (%)</b>	
Observation only	9 (7.38)
Biologics/steroids	18 (14.75)
Immunochemotherapy	54 (44.26)
HSCT	38 (31.15)
Unknown	3 (2.46)
<b>Alive at end of follow-up, n (%)</b>	
Yes	76 (62.30)
No	41 (33.61)
Unknown	5 (4.10)

weeks-18.5 years) with equal proportions of boys (n = 62) and girls (n = 60). Eight subjects had family histories of consanguinity. Six others denied consanguinity, but distant parental kinship could not be excluded after an increased number of rare homozygous variants were observed in the WES data.

### Genetic testing workflow

Of the 122 subjects, a total of 101 received genetic testing. Clinical genetic testing was performed for 87 subjects, including 60 who were tested only by targeted Sanger sequencing, 15 who were assessed only by HLH gene panel testing, 11 who underwent clinical WES, and 1 who received only chromosomal microarray testing (Figures 1A; supplemental Figure 1). Research-based WES analyses were performed for 48 subjects. Genetic testing was not performed in 21 subjects for various reasons,

including early death and clinical testing availability at the time of evaluation.

### Genetic testing confirmed the presence of disease-causing fHLH gene mutations in a limited number of subjects

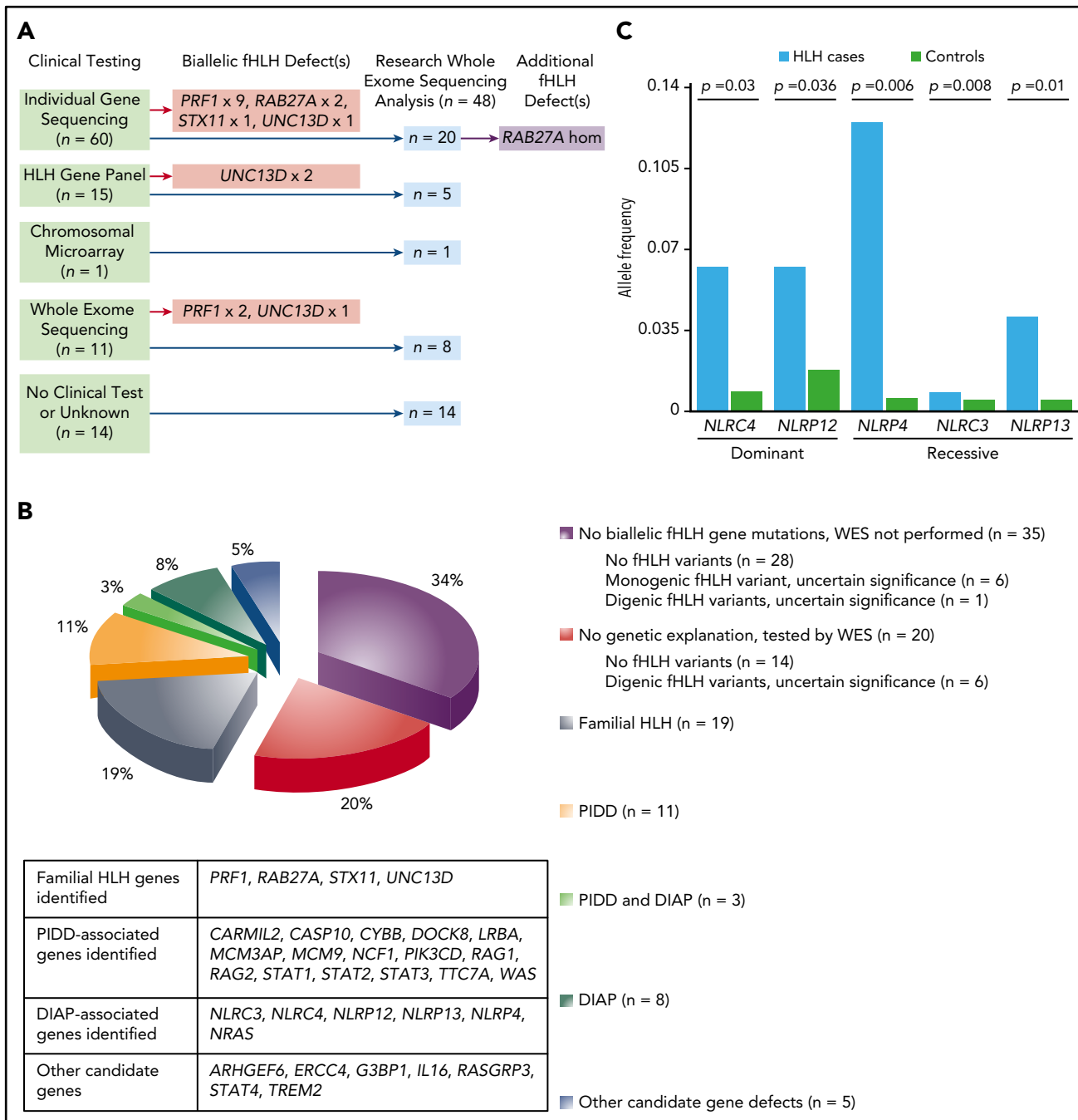
Nineteen of 101 subjects tested (19%) had biallelic mutations in 6 designated fHLH genes (Figure 1B). Clinical sequencing of individual fHLH genes identified 13 cases. Research-based WES of 20 of the remaining 48 subjects within this group revealed a rare, computationally predicted damaging homozygous *RAB27A* variant (supplemental Table 2) in a boy who presented with presumed malignancy-associated HLH and lacked the hair hypopigmentation associated with Griscelli syndrome.<sup>19,20</sup> Clinical HLH gene panel testing identified 2 cases of *Munc13-4* deficiency, and clinical WES successfully diagnosed 2 cases of perforin deficiency and 1 case of *Munc13-4* deficiency.

Variants of unknown significance in fHLH genes were observed in 26 subjects who underwent research-based WES (supplemental Table 2). Most of these variants were either observed frequently in public and internal exome databases or not located in protein-encoding regions. The known pathogenic intronic *UNC13D* c.118-308C>T mutation<sup>11,21</sup> was excluded by Sanger sequencing in the 3 subjects who had single heterozygous *UNC13D* variants (supplemental Table 2). Four subjects had clinical microarray testing performed to exclude copy number variations. Of the 26 subjects, 9 (HLH\_014, HLH\_016, HLH\_017, HLH\_063, HLH\_087, HLH\_097, HLH\_109, HLH\_117, and HLH\_122) had rare and potentially protein sequence-altering single allelic variants of unknown significance in fHLH genes. Similarly, 5 subjects who received only clinical genetic testing carried solitary single heterozygous fHLH gene variants. The possibility that some of these monogenic variants may cause dominant-negative loss of function of the corresponding protein<sup>22</sup> cannot be fully excluded.

Seven subjects who underwent research-based WES (HLH\_014, HLH\_016, HLH\_017, HLH\_063, HLH\_087, HLH\_097, and HLH\_117) had single allelic variants in 2 fHLH genes that were potentially protein sequence-altering (supplemental Table 2). Computational analyses (supplemental Methods) found that heterozygous variants in the various "digenic" dual-gene combinations, except for one (*LYST/RAB27A* in subject HLH\_117, who carries a disease-associated homozygous *RAG1* mutation), were not uncommon (supplemental Table 3). Another subject received only clinical individual gene sequencing and was found to have single allelic variants in *STX11* and *UNC13D*. This variant combination was associated with the HLH phenotype ( $P = .03$ ). These analyses suggest that select combined variants<sup>23</sup> (ie, mutational burden) in fHLH genes may be clinically relevant, but the majority of such variants are present in the general population. Thus, the potential digenic model for variant contribution to HLH lacked overall statistical support.

### WES reveals the presence of other molecular diagnoses in subjects who meet HLH-2004 criteria

Excluding the subject discovered to have *RAB27A* deficiency, 47 subjects underwent research WES analyses and lacked biallelic mutations in fHLH genes, and potential underlying PIDDs were identified in 14 (30%; supplemental Table 4). Four of the 14



**Figure 1. Genetic testing reveals diverse pathogenic mechanisms in patients with HLH.** (A) Summary of workflow for 48 subjects who underwent research-based WES analyses. (B) Genetic profiles for 101 subjects who met the HLH-2004 criteria and received genetic testing. (C) Dominant *NLRC4* and *NLRP12* variants and recessive *NLRP4*, *NLRC3*, and *NLRP13* variants are significantly associated with development of HLH. The number of alleles containing potential protein-altering variants (frameshift insertions/deletions, stop gain/stop loss, splicing defects, nonframeshift insertions/deletions, and missense variants) in *NLRC4*, *NLRP12*, *NLRP4*, *NLRP13*, and *NLRC3* in HLH-affected cases (n = 48) was compared with the number in other samples in the Baylor-Hopkins Center for Mendelian Genomics database (total n = 6677; analyzed n = 5981), which contains exomes from well-phenotyped diseased and healthy individuals (recorded within the PhenoDB database) collected among more than 380 phenotypic cohorts. Unaffected relatives in the HLH cohort (n = 51) and individuals in the Immunodeficiency cohort (n = 645) were excluded from the analysis. Differences in allelic counts between HLH cases and controls (n = 5981) were tested by random sampling without replacement (100 000 iterations).

subjects had variants in genes relevant for cytolytic function in T and NK cells: *WAS*,<sup>24</sup> *TTC7A*<sup>25</sup>/*LRBA*,<sup>26</sup> *DOCK8*,<sup>27</sup> and *CARMIL2*.<sup>28-30</sup> For the subject with compound heterozygous variants in both *TTC7A* and *LRBA*, it remains unclear whether defects in both of these genes are necessary for development of HLH. For *DOCK8*, deletion of the 5' portion of the gene was discovered through bioinformatic detection of loss of WES

reads and confirmed by array comparative genomic hybridization testing (see Stray-Pedersen et al.,<sup>15</sup> Figure E4, Proband 30.1). We also identified biallelic mutations in *RAG1* and *RAG2* in 2 subjects who in hindsight had Omenn syndrome, which shares similar features with HLH.<sup>31</sup> Two other subjects had underlying chronic granulomatous disease.<sup>31</sup> Both subjects carried variants in second genes relevant toward inflammation or cytolytic immune



function that may have further increased the risk for HLH. Four subjects had defects in key T or NK cell-signaling molecules: *STAT1*,<sup>32</sup> *STAT2*,<sup>33</sup> *STAT3*,<sup>34</sup> and *PIK3CD*.<sup>35</sup> WES identified another subject with biallelic variants in *MCM3AP* and *MCM9*. MCM3-associated protein deficiency has been reported to cause PIDD associated with a DNA repair defect.<sup>36</sup> The precise mechanism for HLH in this subject remains unclear. Finally, 1 subject was discovered to have autoimmune lymphoproliferative syndrome type 2 because of a mutation in *CASP10*. Patients with autoimmune lymphoproliferative syndrome may present with features that overlap with HLH.<sup>37</sup>

Here, we introduce a new term, DIAP, or dysregulated immune activation or proliferation, to indicate a group of genes with putative or proven roles in dysregulated immune activation or proliferation. Of the 47 subjects who did not have biallelic mutations in fHLH genes and underwent research WES analyses, 11 (23%) had alterations in DIAP genes (supplemental Table 4). Three of the subjects (HLH\_120, HLH\_121, and HLH\_122) also carried pathogenic or contributing variants in PIDD-associated genes. We bioinformatically tested the significance of differences in allelic counts between cases and controls for variants in these DIAP genes (supplemental Methods). This analysis demonstrated that the single allelic variants in *NLRC4*<sup>38</sup> and *NLRP12*<sup>39</sup> and biallelic variants in *NLRP4*,<sup>40</sup> *NLRC3*,<sup>41,42</sup> and *NLRP13* were significantly associated with HLH (supplemental Table 4; Figure 1C). The correlation between the *NLRC4* variants and HLH corroborates the known link between *NLRC4* mutations and HLH.<sup>38,43</sup> These novel findings underscore a role for mutations in inflammation-associated genes in producing a phenotype that meets criteria for HLH. Finally, 1 subject was found to have a mutation in *NRAS* that is known to produce RAS-associated autoimmune leukoproliferative disorder.<sup>44</sup> Because the variant exists de novo in this subject and all reported mutations in *NRAS* that cause RAS-associated autoimmune leukoproliferative disorder are somatic, this case is included in the DIAP and not the PIDD category.

Other potentially novel genetic explanations were identified in 5 subjects (10%; supplemental Table 4). Because none of these candidates have yet been fully biologically validated, assignment of causality remains uncertain. Nonetheless, they remain leading hypotheses because of their relevance in pathways known to be defective in HLH, including cytotoxicity, regulation of immune activation, and control of proliferation of hematopoietic cells.

### Genetic findings are not enriched in subjects with abnormal CD107a mobilization or decreased expression of HLH-related proteins

HLH immunologic characterization was performed in 76 subjects: 33 were tested both for mobilization of CD107a and expression of HLH-related proteins (perforin, signaling lymphocytic activation molecule-associated protein, and/or baculoviral inhibitor of apoptosis repeat-containing protein 4), 37 were assessed for protein expression alone, and 6 received isolated CD107a functional testing. Genetic testing of 39 of the 43 individuals with abnormal results identified likely explanations in only 20 (51%). Although 10 fHLH probands were captured using this approach, subjects with PIDD ( $n = 3$ ), DIAP ( $n = 4$ ), and combined PIDD/DIAP ( $n = 3$ ) were also discovered among the cases.

### Correlations identified between genetic findings and clinical presentations

Genetic findings correlated with aspects of clinical presentation (Table 2 and Figure 2). Among the 19 subjects with biallelic fHLH genetic mutations, 58% had no identified trigger for HLH and 37% had associated infections; no fHLH subjects had rheumatologic triggers (Figure 2A). For the 11 subjects who had PIDD-associated gene variants and no variants in DIAP-associated genes, 36% had no identified trigger for HLH and 46% had associated infections (Figure 2A). Among the 8 subjects with DIAP-associated variants and no underlying PIDD, the majority (63%) had rheumatologic triggers (Figure 2A). The incidence of HLH-associated triggers did not vary significantly with age aside from perhaps rheumatologic triggers, which were suggested as increased in subjects older than 12 years compared with subjects younger than 1 year (36% vs 11%;  $P = .06$ ; Figure 2B). Interestingly, however, subjects with biallelic fHLH mutations were significantly younger ( $P = .02$ ) than subjects who lacked genetic findings, unlike subjects in the other genetically defined categories (Figure 2C; Table 2). In fact, subjects with fHLH were more likely than other subjects ( $P < .0001$ ) to present younger than 1 year (Figure 2D). In contrast, all subjects who had underlying variants in DIAP-associated genes presented at older than 1 year, whereas subjects with underlying PIDD-associated gene defects presented with similar frequency at all ages.

### Clinical outcomes are associated with genetic findings

Overall survival for the entire cohort was 45% with a median 18.6 months of follow-up (range, 0.04-201.4; Figure 3A). Overall survival estimates were not suggested to differ by HLH genetic profile (Figure 3B; supplemental Table 5). Individuals with fHLH were more likely to receive HSCT than other therapies compared with subjects with no genetic explanation (odds ratio, 7.33; 95% confidence interval, 2.35-22.89). Disease trigger was significantly associated with survival: subjects with rheumatologic disease or no obvious trigger exhibited better survival than subjects with HLH triggered by infection or malignancy ( $P < .05$ ; Figure 3C; supplemental Table 6). All 9 subjects whose milder clinical course required only observation survived. No significant difference in survival was observed between subjects treated with biologics/steroids, immunochemotherapy, and HSCT, and no deaths occurred after 1 year in subjects treated with biologics/steroids (Table 3).

## Discussion

### Diagnostic considerations

These results demonstrate that patients clinically diagnosed with HLH using the HLH-2004 criteria represent a distinct category of patients with persistent, toxic immune activation at high risk for death. We found that 80 (66%) of 122 subjects with HLH had likely or potential disease-causing genetic, autoimmune, or oncologic etiologies underlying the phenotype. Importantly, 55 subjects received genetic testing and lacked biallelic fHLH gene mutations or other genetic explanations, yet 35 (64%) were not evaluated by WES. For 48 subjects who underwent research WES analyses, potential disease-causing genetic defects were identified in 28 (58%).

In this ethnically diverse cohort, although the HLH-2004 criteria did not demonstrate the high prevalence of fHLH exhibited in

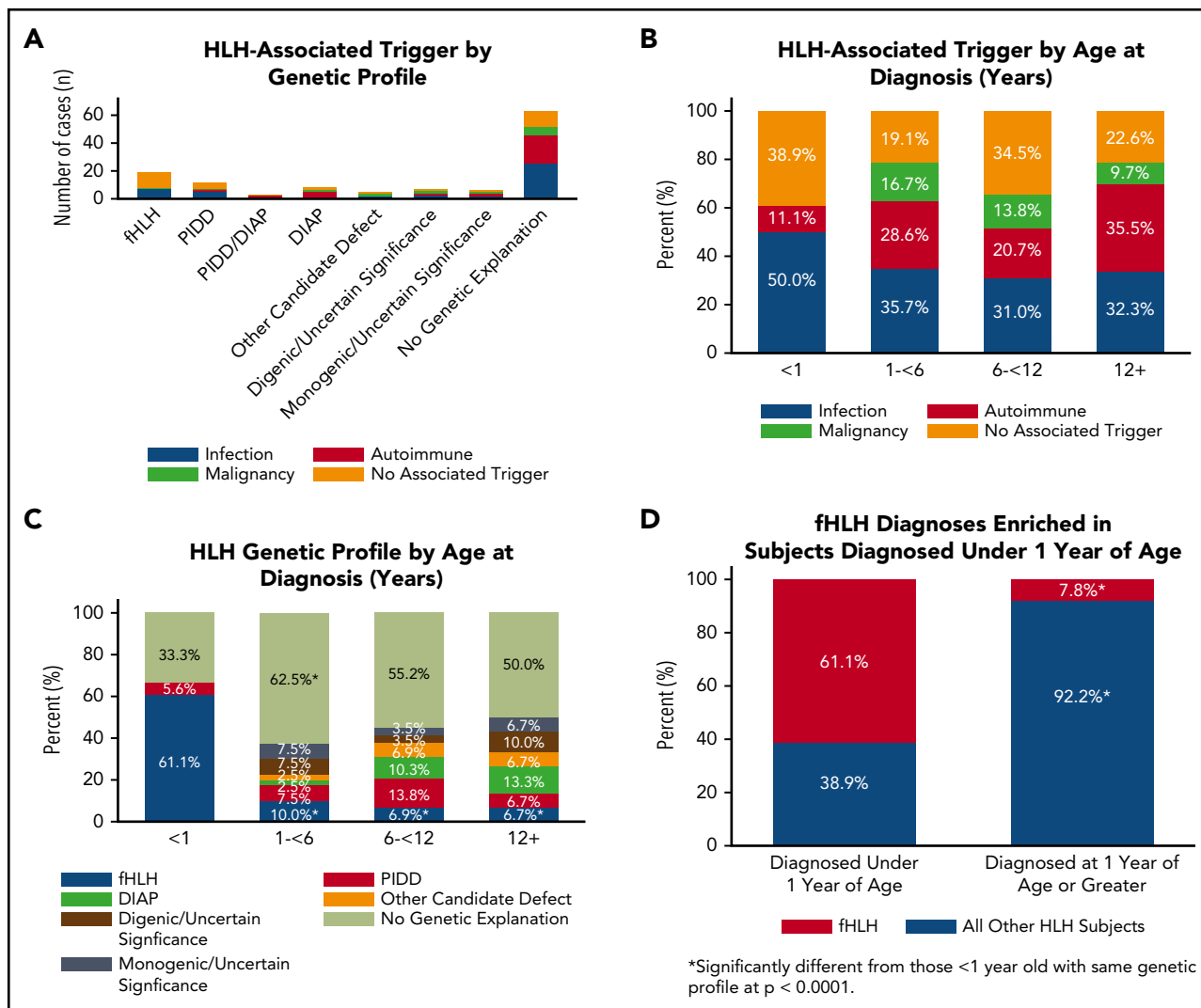
**Table 2. Genetic findings and aspects of clinical presentation**

Genetic category	N	Age at diagnosis, median (range), y	P value, median age	Overall survival estimate,* %	Associated trigger, %	Maximum level of therapy, %
fhLH	19	0.51 (0.04-16.07)	.02	54	None: 57.9†	Observation/none: 0.0
					Autoimmune: 0.0†	Biologics/steroids: 0.0
					Infection: 36.8	Immunotherapy: 26.3‡
					Malignancy: 5.3	H SCT: 73.7†
PIDD	11	8.73 (0.14-17.96)	.71	88	None: 36.4	Observation/none: 0.0
					Autoimmune: 9.1	Biologics/steroids: 0.0
					Infection: 45.5	Immunotherapy: 81.8†
					Malignancy: 9.1	H SCT: 0.0
DIAP	8	10.96 (1.36-18.51)	.06	67	None: 25.0	Observation/none: 0.0
					Autoimmune: 62.5	Biologics/steroids: 37.5
					Infection: 0.0†	Immunotherapy: 50.0
					Malignancy: 12.5	H SCT: 12.5
Other candidate defects	5	9.34 (2.79-17.03)	.36	67	None: 20.0	Observation/none: 20.0
					Autoimmune: 0.0	Biologics/steroids: 0.0
					Infection: 40.0	Immunotherapy: 40.0
					Malignancy: 40.0	H SCT: 20.0
No genetic explanation	76	6.18 (0.05-17.53)	Reference	47	None: 17.1	Observation/none: 10.5
					Autoimmune: 32.9	Biologics/steroids: 18.4
					Infection: 38.2	Immunotherapy: 43.4
					Malignancy: 11.8	H SCT: 27.6

\*By Kaplan-Meier analysis.

†Significantly different compared with no genetic explanation group ( $P < .05$ ).

‡N = 5, including 3 who died before H SCT and 2 with H SCT anticipated.



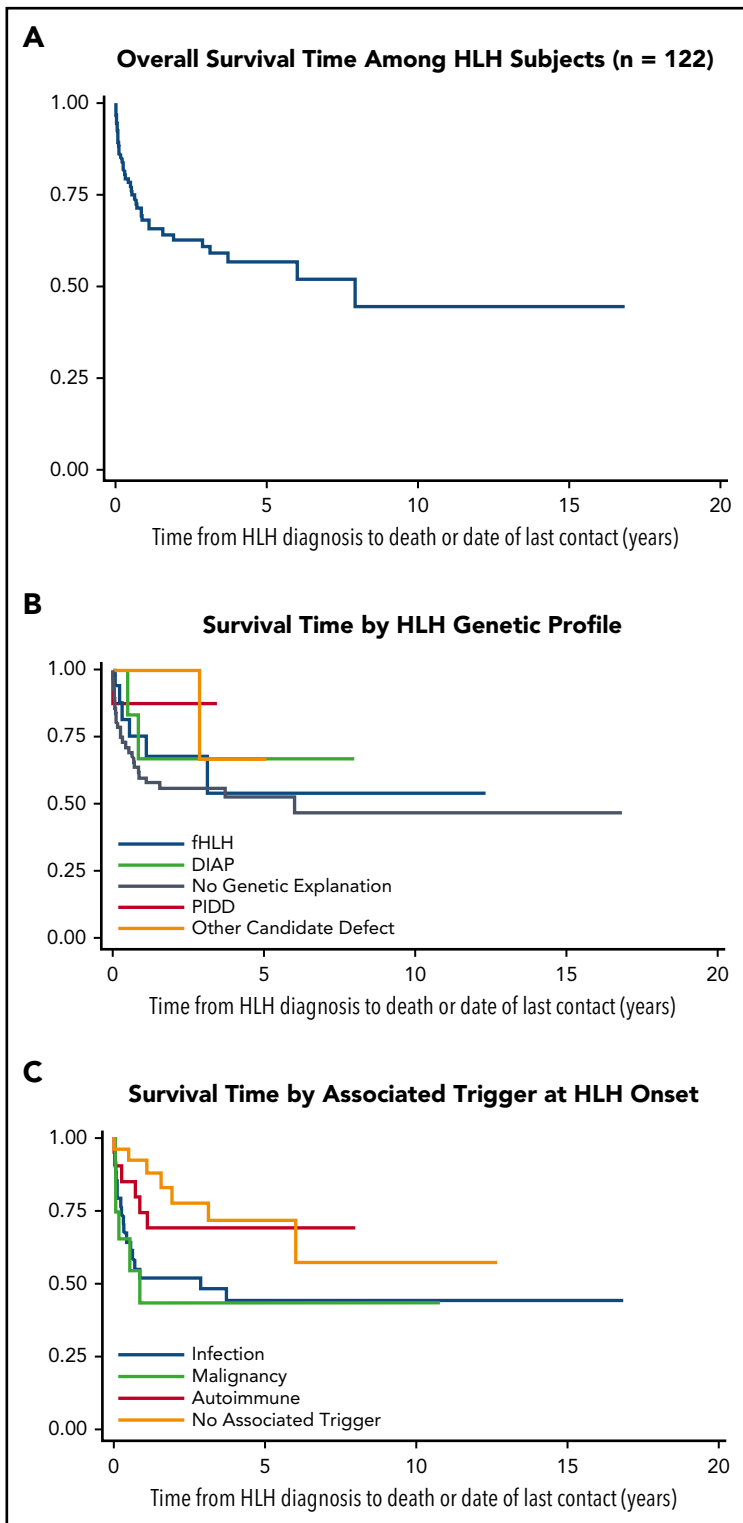
**Figure 2. Features of clinical presentation correlate with genetic findings.** (A) HLH-associated trigger by genetic profile. Primary triggers for the presenting HLH episode of 122 subjects were defined as infection (blue), malignancy (green), autoimmune disease (red), or no associated trigger (orange). A trigger was identified in 74% of subjects. (B) HLH-associated trigger by age at diagnosis. Subjects (n = 122) were separated into 4 groups by age in years (x-axis) and analyzed by HLH-triggering event. A two-sample test of proportions with a 95% confidence level for each comparison was used to analyze proportional differences in trigger by age. (C) HLH genetic profile by age at diagnosis. Subjects were placed into the same 4 groups by age in years (x-axis), excluding subjects with potential disease-causing variants in PIDD and DIAP genes (n = 3). A two-sample test of proportions with a 95% confidence level for each comparison was used to analyze proportional differences in genetic profile by age (total n = 119). (D) Biallelic fHLH variants are enriched in subjects younger than 1 year. A two-sample test of proportions with a 95% confidence level was used to analyze the proportional difference between fHLH cases diagnosed at younger than 1 year and older than 1 year of age (total n = 122).

the European studies,<sup>11-14</sup> they identified patients with HLH resulting from other genetic conditions. Overall, genetic testing of 101 subjects with HLH secured likely molecular diagnoses in 46 (46%; or 70% excluding the 35 subjects not tested by WES). Biallelic fHLH gene mutations were identified in only 19% of 101 subjects. This result may reflect the fact that genetic testing was performed on the basis of overall fulfillment of HLH-2004 criteria and not simply focused toward subjects with abnormal expression of HLH-related proteins or defective cytolytic function.<sup>11-14</sup> Furthermore, modeling of mutational burden in fHLH genes found that most potential digenic combinations were unlikely to arise with greater frequency in HLH than in the general population. Clinical laboratory results reporting digenic variants should therefore be interpreted with caution. Meanwhile, variants associated with PIDDs and DIAP were found in 22% of 101 cases (33% excluding the 35 subjects not tested by WES). Thus, in this cohort, HLH-2004

criteria identified more cases of potential PIDD or DIAP than fHLH. This observation emphasizes the need to conceptualize HLH as a phenotype rather than a single disease. For example, in patients with PIDD, impaired ability to eliminate pathogens can drive formation of the HLH phenotype. This phenomenon has been clearly reported by others.<sup>31</sup> In contrast, the HLH phenotype may arise in patients with DIAP because of exaggerated or poorly controlled immunologic responses. Neither of these conditions necessitates defective cytotoxicity. Thus, targeted sequencing or testing of cytolytic function may not be sufficient for identifying inherited causes of HLH.

An emerging concept creates a spectrum of genotype and phenotype rather than dichotomous primary and secondary categories.<sup>4</sup> Our results argue that even patients with presumed secondary HLH may benefit from investigations for underlying genetic conditions. Among our subjects with presumed secondary





**Figure 3. Outcome data for HLH subject cohort (Kaplan-Meier survival curves).** (A) Overall survival estimate from HLH diagnosis to date of death or last contact in years (n = 122). (B) Survival estimates from HLH diagnosis to date of death or last contact in years by genetic profile (total n = 119). (C) Survival estimates from HLH diagnosis to date of death or last contact in years by associated trigger (n = 122).

HLH, disease-associated variants in fHLH, PIDD, and DIAP genes were identified in 22% (7 of 32) of subjects with autoimmune disease and 21% (3 of 14) of subjects with malignancy.

Our results also suggest that addition of an age parameter to the HLH-2004 criteria may increase the specificity for fHLH. We observed that fHLH was statistically enriched in subjects who were diagnosed at younger than 1 year of age. This phenomenon

is consistent with findings reported by others.<sup>12,13,45</sup> Meanwhile, the majority of subjects who had underlying variants in DIAP-associated genes were older. Nevertheless, age ranges for these groups overlap.

**Therapeutic implications**

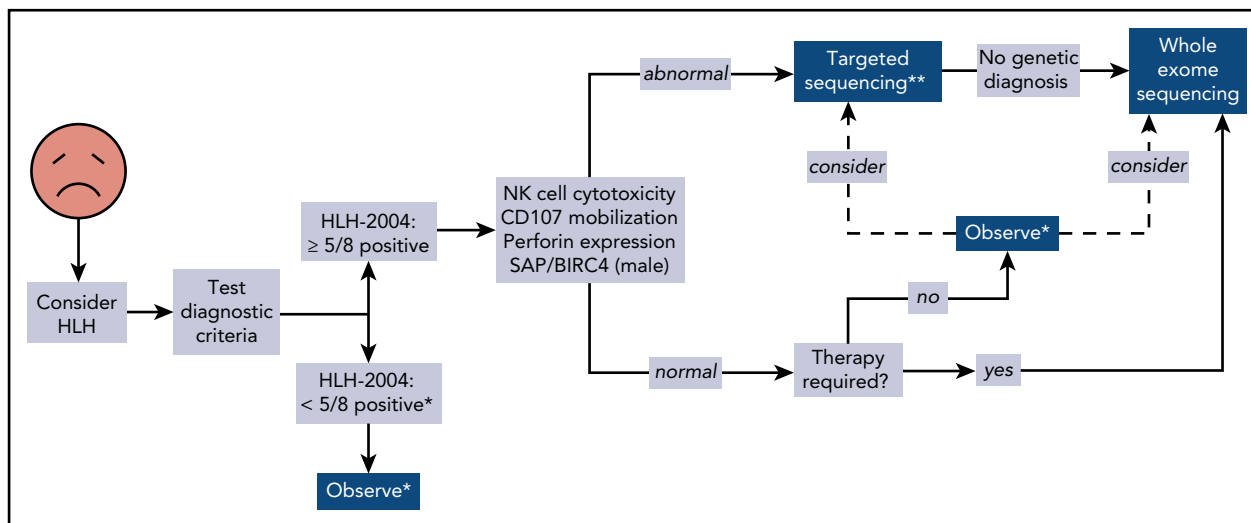
In this cohort, overall survival was 45%, which is comparable to other reports.<sup>5</sup> The management of HLH at this time is dictated

**Table 3. Clinical and genetic features by maximum level of therapy received**

Maximum level of therapy	Total	Overall survivors, N	1-year survival estimate,* %	3-year survival estimate,* %	Overall survival estimate,* %	Associated trigger, %	Genetic profile, %
Observation/none	9	9	100	100	100	None: 22.2	fHLH: 0.0
						Autoimmune: 11.1	PIDD: 0.0
						Infection: 55.6	DIAP: 0.0
						Malignancy: 11.1	PIDD/DIAP: 0.0
							Other candidate defects: 11.1
No genetic explanation: 88.9							
Biologics/steroids	18	14	70	70.0	70	None: 11.1	fHLH: 0.0
						Autoimmune: 55.6	PIDD: 0.0
						Infection: 33.3	DIAP: 16.7
						Malignancy: 0.0†	PIDD/DIAP: 5.6
							Other candidate defects: 0.0
No genetic explanation: 77.8							
Immunochemotherapy	54	32	58	58	39	None: 18.5	fHLH: 9.3
						Autoimmune: 31.5	PIDD: 16.7
						Infection: 29.6	DIAP: 7.4
						Malignancy: 20.4	PIDD/DIAP: 1.9
							Other candidate defects: 3.7
No genetic explanation: 61.1							
HSCT	38	21	75	57	40	None: 47.4†	fHLH: 36.8†
						Autoimmune: 10.5†	PIDD: 0.0†
						Infection: 39.5	DIAP: 2.6
						Malignancy: 2.6†	PIDD/DIAP: 2.6
							Other candidate defects: 2.6
No genetic explanation: 55.3							

\*By Kaplan-Meier analysis.

†Significantly different compared with HLH standard of care Immunochemotherapy group ( $P < .05$ ).



**Figure 4. Proposed algorithm for testing of critically ill children.** \*Decision regarding further evaluation requires clinical judgment. \*\*Strongly recommended in children younger than 1 year. Abbreviations: BIRC4, baculoviral inhibitor of apoptosis repeat-containing protein 4; SAP, signaling lymphocytic activation molecule-associated protein.

by the clinical presentation and course of each patient. Patients with minimal or short-lived symptoms typically receive only observation or minimally toxic therapies. The current approach to patients who require immunochemotherapy involves initiation of etoposide and dexamethasone (for patients lacking coincident autoimmune disease).<sup>7</sup> These agents, however, are not feasible for long-term immunosuppression because of cumulative toxicity.<sup>46</sup> In general, HSCT is reserved for patients presenting with HLH because of fHLH gene defects, exhibiting persistent or progressive pathologic inflammation after HLH-94 induction, demonstrating persistent cytolytic immune function defects, or having central nervous system inflammation.<sup>7</sup> Thus, patients who exhibit greater severity of disease and likelihood for nonsurvival receive more intense therapies that convey increased risk for poor outcomes (Table 3).

The current practice of relying on failure of therapy to dictate escalation of treatment places patients at risk for increased morbidity and mortality. Although our results suggest that WES may be deferred in patients who are managed by observation alone, this study also supports the use of WES to guide long-term clinical decision-making for patients with clinically diagnosed HLH on initiation of therapy. First, these data revealed multiple potential molecular pathways leading to HLH. Early identification of these altered pathways may offer alternative therapeutic opportunities, such as targeted biologic therapy. Second, WES can confirm the presence of fHLH or an underlying PIDD for which HSCT is indicated. Finally, WES can identify unanticipated inherited gene defects that may be shared by potential allograft donors.

### Genetic testing in children with HLH

Our genetic findings reflect a very diverse population at a large referral center and differ from results elsewhere that suggest focused use of genetic testing toward subjects who demonstrate decreased mobilization of CD107a or expression of HLH-related proteins.<sup>14</sup> Although such an approach led to genetic diagnoses in 85% of subjects in 1 cohort, we found that only 51% of individuals with such laboratory abnormalities in our population

had likely genetic explanations. The discrepancy may be partially attributed to differences in study populations and design, as 46 of the subjects in this cohort, including 6 subjects with fHLH, did not receive testing of CD107a mobilization or expression of HLH-related proteins. Nonetheless, the defective genes in our cohort extended well beyond *PRF1*, *UNC13D*, *STX11*, *STXBP2*, *LYST*, *RAB27A*, *AP3B1*, *SH2D1A*, and *XIAP*. Furthermore, such a focused approach would have failed to capture the subject with *CASP10* deficiency and another subject with a potential novel genetic diagnosis, as both probands had normal CD107a function and HLH-related protein expression.

We propose a broader approach for use of WES, if rapidly available, in patients with HLH (Figure 4). This algorithm combines our findings with experiences reported by others.<sup>12,14,47</sup> First, HLH must be considered in ill children, and the HLH-2004 diagnostic criteria should be interrogated accordingly. If sufficient criteria are not fulfilled, clinical judgment must be exercised to determine which individuals should be observed closely for potential progression such that the criteria eventually become met. Children who satisfy 5 or more of the 8 criteria should receive immunologic laboratory testing for cytolytic function and expression of HLH-related proteins. If these tests demonstrate abnormalities, targeted gene sequencing should be performed, especially if the patient is younger than 1 year. We argue that WES should follow if no genetic diagnosis has been secured. Children with HLH who have normal or unhelpful immunologic laboratory testing results and require minimal therapy may be observed without genetic testing, although targeted gene sequencing or WES should be considered. We did not find any cases of familial HLH, PIDD, or DIAP in this small subgroup of individuals, but further studies will be needed to determine whether WES should be used to search for other underlying genetic conditions. In contrast, patients with persistent or recurrent HLH or who require initiation of steroids, biologics, or more should receive WES.

It remains important to note that although WES currently serves as the most expedient broad genetic test in terms of cost,

analytic difficulty, turnaround time, and availability, other techniques may eventually supplant this method because of several of its limitations. WES is known to miss structural variations, and despite enhanced bioinformatic tools,<sup>15,48</sup> identification of gross copy number variations remains difficult. In addition, WES is not designed to interrogate intronic variants that may affect either promoter or enhancer elements, resulting in altered protein expression, or introduce cryptic start codons or splicing sites. These abilities are better captured by whole-genome sequencing and RNA sequencing, which may ultimately become preferred diagnostic tests in the future.

In conclusion, in this study the HLH-2004 criteria identified a cohort of critically ill children with a broad spectrum of genetic conditions, autoimmune disease, and malignancy that result in the HLH phenotype. Clinical suspicion for HLH and application of the HLH-2004 criteria remain the most critical steps in identifying patients with pathologic immune activation. After clinical identification, subsequent evaluations should include studies to identify inherited molecular defects that underlie inability to regulate immunologic homeostasis. Additional prospective trials enrolling at time of suspicion of HLH will prove helpful for determining therapeutic strategies based on pathogenic molecular mechanisms.

## Acknowledgments

This work was funded in part by grants from the Histicure Foundation (K.L.M. and C.E.A.), St. Baldrick's Foundation (to NACHO Consortium, K.L.M., and C.E.A.), National Institutes of Health, National Cancer Institute (R25CA160078: Training Program in Pediatric Cancer Epidemiology and Control Grant to E.C.P.-G.), American Society of Hematology (Scholar Award in Clinical Research to E.C.P.-G.), the Thrasher Research Fund (Early Career Award to E.C.P.-G.), and the Feldman Family. This work was also supported by the following: National Institutes of Health, National Institute of Allergy and Infectious Diseases grants R01AI067946 and R01AI120989 (J.S.O.), National Institutes of Health, National Human

Genome Research Institute/National Heart, Lung, and Blood Institute grant UM1HG006542 (to the Baylor-Hopkins Center for Mendelian Genomics), National Institutes of Health, National Institute of Neurological Disorders and Stroke grant R01NS058529 (J.R.L.), and the Jeffrey Modell Foundation Translational Research Program Grant (I.K.C.).

## Authorship

Contribution: I.K.C. analyzed data and wrote the manuscript; O.S.E. and B.R.G. analyzed clinical data; E.C.P.-G. and Z.H.C.-A. performed statistical and bioinformatic analyses, respectively, and wrote portions of the manuscript; L.R.F., S.K.N., H.A.A., M.I.D., H.E.H., R.A.K., C.A.M., T.C.N., D.A.B., J.R.G., L.A.P., M.C.P., J.C.A.-B., S.A.M., W.A.-H., A.C., T.N.C., and D.N.H. collected samples and clinical or research data; E.M.M., T.P.V., and A.S.-P. analyzed genetic data; S.N.J., D.M.M., and R.A.G. performed WES; J.R.L., J.S.O., and K.L.M. provided expertise and supervision of the research; and C.E.A. supervised the research study and wrote portions of the manuscript.

Conflict-of-interest disclosure: The authors declare no competing financial interests.

Correspondence: Carl E. Allen, Feigin Center, Suite 730.06, 1102 Bates St, Houston, TX 77030; e-mail: ceallen@txch.org; and Ivan K. Chinn, Feigin Center, Suite 330, 1102 Bates St, Houston, TX 77030; e-mail: chinn@bcm.edu.

## Footnotes

Submitted 6 November 2017; accepted 3 April 2018. Prepublished online as *Blood* First Edition paper, 9 April 2018; DOI 10.1182/blood-2017-11-814244.

The online version of this article contains a data supplement.

There is a *Blood* Commentary on this article in this issue.

The publication costs of this article were defrayed in part by page charge payment. Therefore, and solely to indicate this fact, this article is hereby marked "advertisement" in accordance with 18 USC section 1734.

## REFERENCES

- Bodley Scott R, Robb-Smith AHT. Histiocytic medullary reticulosis. *Lancet*. 1939;234(6047):194-198.
- Farquhar JW, Claireaux AE. Familial haemophagocytic reticulosis. *Arch Dis Child*. 1952; 27(136):519-525.
- Henter J-I, Horne A, Aricò M, et al. HLH-2004: diagnostic and therapeutic guidelines for hemophagocytic lymphohistiocytosis. *Pediatr Blood Cancer*. 2007;48(2):124-131.
- Allen CE, McClain KL. Pathophysiology and epidemiology of hemophagocytic lymphohistiocytosis. *Hematology Am Soc Hematol Educ Program*. 2015;2015:177-182.
- Henter J-I, Samuelsson-Horne A, Aricò M, et al; Histiocyte Society. Treatment of hemophagocytic lymphohistiocytosis with HLH-94 immunochemotherapy and bone marrow transplantation. *Blood*. 2002;100(7):2367-2373.
- Castillo L, Carcillo J. Secondary hemophagocytic lymphohistiocytosis and severe sepsis/ systemic inflammatory response syndrome/multiorgan dysfunction syndrome/macrophage activation syndrome share common intermediate phenotypes on a spectrum of inflammation. *Pediatr Crit Care Med*. 2009; 10(3):387-392.
- Jordan MB, Allen CE, Weitzman S, Filipovich AH, McClain KL. How I treat hemophagocytic lymphohistiocytosis. *Blood*. 2011;118(15):4041-4052.
- Henter JI, Elinder G. Familial hemophagocytic lymphohistiocytosis. Clinical review based on the findings in seven children. *Acta Paediatr Scand*. 1991;80(3):269-277.
- Janka GE. Familial hemophagocytic lymphohistiocytosis. *Eur J Pediatr*. 1983;140(3):221-230.
- Imashuku S, Kuriyama K, Teramura T, et al. Requirement for etoposide in the treatment of Epstein-Barr virus-associated hemophagocytic lymphohistiocytosis. *J Clin Oncol*. 2001; 19(10):2665-2673.
- Meeths M, Chiang SCC, Wood SM, et al. Familial hemophagocytic lymphohistiocytosis type 3 (FHL3) caused by deep intronic mutation and inversion in *UNC13D*. *Blood*. 2011; 118(22):5783-5793.
- Tesi B, Lagerstedt-Robinson K, Chiang SCC, et al. Targeted high-throughput sequencing for genetic diagnostics of hemophagocytic lymphohistiocytosis. *Genome Med*. 2015;7(1):130.
- Cetica V, Sieni E, Pende D, et al. Genetic predisposition to hemophagocytic lymphohistiocytosis: Report on 500 patients from the Italian registry. *J Allergy Clin Immunol*. 2016; 137(1):188-196.
- Ammann S, Lehmborg K, Zur Stadt U, et al; HLH study of the GPOH. Effective immunological guidance of genetic analyses including exome sequencing in patients evaluated for hemophagocytic lymphohistiocytosis. *J Clin Immunol*. 2017;37(8):770-780.
- Stray-Pedersen A, Sorte HS, Samarakoon P, et al. Primary immunodeficiency diseases: Genomic approaches delineate heterogeneous Mendelian disorders. *J Allergy Clin Immunol*. 2017;139(1):232-245.
- Lupski JR, Gonzaga-Jauregui C, Yang Y, et al. Exome sequencing resolves apparent incidental findings and reveals further complexity of SH3TC2 variant alleles causing Charcot-Marie-Tooth neuropathy. *Genome Med*. 2013;5(6):57.
- Kircher M, Witten DM, Jain P, O'Roak BJ, Cooper GM, Shendure J. A general framework for estimating the relative pathogenicity of

- human genetic variants. *Nat Genet.* 2014; 46(3):310-315.
18. Itan Y, Shang L, Boisson B, et al. The mutation significance cutoff: gene-level thresholds for variant predictions. *Nat Methods.* 2016; 13(2):109-110.
  19. Netter P, Chan SK, Banerjee PP, et al. A novel Rab27a mutation binds melanophilin, but not Munc13-4, causing immunodeficiency without albinism. *J Allergy Clin Immunol.* 2016; 138(2):599-601.
  20. Cetica V, Hackmann Y, Grieve S, et al. Patients with Griscelli syndrome and normal pigmentation identify RAB27A mutations that selectively disrupt MUNC13-4 binding. *J Allergy Clin Immunol.* 2015;135(5):1310-1318.
  21. Seo JY, Song J-S, Lee K-O, et al; Korea Histocytosis Working Party. Founder effects in two predominant intronic mutations of UNC13D, c.118-308C>T and c.754-1G>C underlie the unusual predominance of type 3 familial hemophagocytic lymphohistiocytosis (FHL3) in Korea. *Ann Hematol.* 2013;92(3): 357-364.
  22. Spessott WA, Sanmillan ML, McCormick ME, et al. Hemophagocytic lymphohistiocytosis caused by dominant-negative mutations in STXP2 that inhibit SNARE-mediated membrane fusion. *Blood.* 2015;125(10):1566-1577.
  23. Sepulveda FE, Garrigue A, Maschalidi S, et al. Polygenic mutations in the cytotoxicity pathway increase susceptibility to develop HLH immunopathology in mice. *Blood.* 2016; 127(17):2113-2121.
  24. Pasic S, Micic D, Kuzmanovic M. Epstein-Barr virus-associated haemophagocytic lymphohistiocytosis in Wiskott-Aldrich syndrome. *Acta Paediatr.* 2003;92(7):859-861.
  25. Lemoine R, Pachlopnik-Schmid J, Farin HF, et al. Immune deficiency-related enteropathy-lymphocytopenia-alopecia syndrome results from tetratricopeptide repeat domain 7A deficiency. *J Allergy Clin Immunol.* 2014; 134(6):1354-1364.
  26. Gámez-Díaz L, August D, Stepensky P, et al. The extended phenotype of LPS-responsive beige-like anchor protein (LRBA) deficiency. *J Allergy Clin Immunol.* 2016;137(1):223-230.
  27. Randall KL, Chan SSY, Ma CS, et al. DOCK8 deficiency impairs CD8 T cell survival and function in humans and mice. *J Exp Med.* 2011;208(11):2305-2320.
  28. Wang Y, Ma CS, Ling Y, et al. Dual T cell- and B cell-intrinsic deficiency in humans with biallelic *RLTPR* mutations. *J Exp Med.* 2016; 213(11):2413-2435.
  29. Sorte HS, Osnes LT, Fevang B, et al. A potential founder variant in *CARMIL2/RLTPR* in three Norwegian families with warts, molluscum contagiosum, and T-cell dysfunction. *Mol Genet Genomic Med.* 2016;4(6):604-616.
  30. Roncagalli R, Cucchetti M, Jarmuzynski N, et al. The scaffolding function of the *RLTPR* protein explains its essential role for CD28 costimulation in mouse and human T cells. *J Exp Med.* 2016;213(11):2437-2457.
  31. Bode SFN, Ammann S, Al-Herz W, et al; Inborn Errors Working Party of the EBMT. The syndrome of hemophagocytic lymphohistiocytosis in primary immunodeficiencies: implications for differential diagnosis and pathogenesis. *Haematologica.* 2015;100(7): 978-988.
  32. Faitelson Y, Bates A, Shroff M, Grunebaum E, Roifman CM, Naqvi A. A mutation in the STAT1 DNA-binding domain associated with hemophagocytic lymphohistiocytosis. *LymphoSign Journal.* 2014;1(2):87-95.
  33. Hambleton S, Goodbourn S, Young DF, et al. STAT2 deficiency and susceptibility to viral illness in humans. *Proc Natl Acad Sci USA.* 2013;110(8):3053-3058.
  34. Milner JD, Vogel TP, Forbes L, et al. Early-onset lymphoproliferation and autoimmunity caused by germline *STAT3* gain-of-function mutations. *Blood.* 2015;125(4):591-599.
  35. Lucas CL, Kuehn HS, Zhao F, et al. Dominant-activating germline mutations in the gene encoding the PI(3)K catalytic subunit p110 $\delta$  result in T cell senescence and human immunodeficiency. *Nat Immunol.* 2014;15(1): 88-97.
  36. Gatz SA, Salles D, Jacobsen E-M, et al. MCM3AP and POMP mutations cause a DNA-repair and DNA-damage-signaling defect in an immunodeficient child. *Hum Mutat.* 2016; 37(3):257-268.
  37. Rudman Spergel A, Walkovich K, Price S, et al. Autoimmune lymphoproliferative syndrome misdiagnosed as hemophagocytic lymphohistiocytosis. *Pediatrics.* 2013;132(5): e1440-e1444.
  38. Canna SW, de Jesus AA, Gouni S, et al. An activating *NLR4* inflammasome mutation causes autoinflammation with recurrent macrophage activation syndrome. *Nat Genet.* 2014;46(10):1140-1146.
  39. Jéru I, Duquesnoy P, Fernandes-Alnemri T, et al. Mutations in *NALP12* cause hereditary periodic fever syndromes. *Proc Natl Acad Sci USA.* 2008;105(5):1614-1619.
  40. Cui J, Li Y, Zhu L, et al. *NLRP4* negatively regulates type I interferon signaling by targeting the kinase *TBK1* for degradation via the ubiquitin ligase *DTX4*. *Nat Immunol.* 2012; 13(4):387-395.
  41. Schneider M, Zimmermann AG, Roberts RA, et al. The innate immune sensor *NLRC3* attenuates Toll-like receptor signaling via modification of the signaling adaptor *TRAF6* and transcription factor *NF- $\kappa$ B*. *Nat Immunol.* 2012;13(9):823-831.
  42. Zhang L, Mo J, Swanson KV, et al. *NLRC3*, a member of the *NLR* family of proteins, is a negative regulator of innate immune signaling induced by the DNA sensor *STING*. *Immunity.* 2014;40(3):329-341.
  43. Liang J, Alfano DN, Squires JE, et al. Novel *NLRC4* mutation causes a syndrome of perinatal autoinflammation with hemophagocytic lymphohistiocytosis, hepatosplenomegaly, fetal thrombotic vasculopathy, and congenital anemia and ascites. *Pediatr Dev Pathol.* 2017; 20(6):498-505.
  44. Calvo KR, Price S, Braylan RC, et al. *JMML* and *RALD* (Ras-associated autoimmune leukoproliferative disorder): common genetic etiology yet clinically distinct entities. *Blood.* 2015;125(18):2753-2758.
  45. Sepulveda FE, Debeurme F, Ménasché G, et al. Distinct severity of HLH in both human and murine mutants with complete loss of cytotoxic effector *PRF1*, *RAB27A*, and *STX11*. *Blood.* 2013;121(4):595-603.
  46. Johnson TS, Terrell CE, Millen SH, Katz JD, Hildeman DA, Jordan MB. Etoposide selectively ablates activated T cells to control the immunoregulatory disorder hemophagocytic lymphohistiocytosis. *J Immunol.* 2014;192(1): 84-91.
  47. Tesi B, Sieni E, Neves C, et al. Hemophagocytic lymphohistiocytosis in 2 patients with underlying *IFN- $\gamma$*  receptor deficiency. *J Allergy Clin Immunol.* 2015; 135(6):1638-1641.
  48. Gambin T, Akdemir ZC, Yuan B, et al. Homozygous and hemizygous CNV detection from exome sequencing data in a Mendelian disease cohort. *Nucleic Acids Res.* 2017;45(4): 1633-1648.



**blood**<sup>®</sup>

2018 132: 89-100

doi:10.1182/blood-2017-11-814244 originally published  
online April 9, 2018

## **Genetic and mechanistic diversity in pediatric hemophagocytic lymphohistiocytosis**

Ivan K. Chinn, Olive S. Eckstein, Erin C. Peckham-Gregory, Baruch R. Goldberg, Lisa R. Forbes, Sarah K. Nicholas, Emily M. Mace, Tiphonie P. Vogel, Harshal A. Abhyankar, Maria I. Diaz, Helen E. Heslop, Robert A. Krance, Caridad A. Martinez, Trung C. Nguyen, Dalia A. Bashir, Jordana R. Goldman, Asbjørg Stray-Pedersen, Luis A. Pedroza, M. Cecilia Poli, Juan C. Aldave-Becerra, Sean A. McGhee, Waleed Al-Herz, Aghiad Chamdin, Zeynep H. Coban-Akdemir, Shalini N. Jhangiani, Donna M. Muzny, Tram N. Cao, Diana N. Hong, Richard A. Gibbs, James R. Lupski, Jordan S. Orange, Kenneth L. McClain and Carl E. Allen

---

Updated information and services can be found at:

<http://www.bloodjournal.org/content/132/1/89.full.html>

Articles on similar topics can be found in the following Blood collections

[Immunobiology and Immunotherapy](#) (5617 articles)

[Pediatric Hematology](#) (579 articles)

[Phagocytes, Granulocytes, and Myelopoiesis](#) (664 articles)

---

Information about reproducing this article in parts or in its entirety may be found online at:

[http://www.bloodjournal.org/site/misc/rights.xhtml#repub\\_requests](http://www.bloodjournal.org/site/misc/rights.xhtml#repub_requests)

Information about ordering reprints may be found online at:

<http://www.bloodjournal.org/site/misc/rights.xhtml#reprints>

Information about subscriptions and ASH membership may be found online at:

<http://www.bloodjournal.org/site/subscriptions/index.xhtml>

Blood (print ISSN 0006-4971, online ISSN 1528-0020), is published weekly by the American Society of Hematology, 2021 L St, NW, Suite 900, Washington DC 20036.

Copyright 2011 by The American Society of Hematology; all rights reserved.